

GENERAL INFORMATION

Project Name: _____

STANDARD SPECIFICATIONS

- ☐ 1" Diameter Brushed Aluminum Posts
- ☐ 3/8" Clear Tempered Front Glass Panels (max. span 66")
- ☐ 1/4" Clear Tempered Glass End Panels
- ☐ 1" Radius Glass Corners

OPTIONS AND ACCESSORIES

NSF-LISTED FINISH OPTIONS

- ☐ Brushed Stainless #4 (Standard)
- ☐ Stainless Steel #8 (Chrome)
- ☐ Statuary Bronze
- ☐ Matte Black
- ☐ Gloss Black
- ☐ Wrinkle Black
- ☐ Prismatic Brass
- ☐ Smoked Copper
- ☐ Other _____

GLASS FINISHES

- ☐ Clear (Standard)
- ☐ Low-Iron
- ☐ Frosted
- ☐ Frosted Logo/Imprint
- ☐ Pattern

GLASS CORNERS

- ☐ 1" Radius Corners (Standard)
- ☐ Square Corners

MOUNTING STYLES (SELECT ONE)

See Installation Page for More Details

Above Counter: Stainless Steel Counter

☐ SS1: EZ Mount 2" x 8" Flange

Under Counter: Stainless Steel Counter

☐ SSU3-H: Heavy-Duty Flange

☐ SSU3-N: Narrow Flange

(Requires Under-Counter Reinforcement & Access)

☐ SSU5-H: Heavy-Duty Flange

☐ SSU5-N: Narrow Flange

Above Counter: Millwork Counter

☐ MW1: Heavy-Duty Flange

☐ MW2: Narrow Flange

Under Counter: Millwork Counter

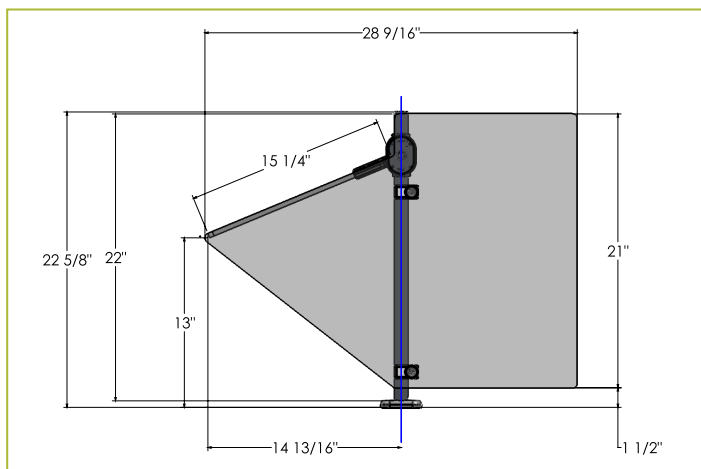
☐ MWU3: Narrow Flange

☐ MWU5: Heavy-Duty Flange

☐ MWU4: Compression Installation (not recommended for solid surfaces)

AX7500

Self Serve, Single Post



To meet NSF guidelines, end panels are included on all BSI quotations unless specifically excluded. (See end panel page for more details.)